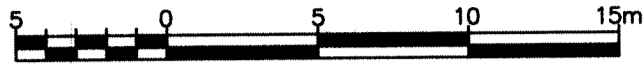
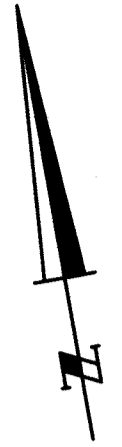


PLAN SHOWING TOPOGRAPHICAL DETAIL ON
 LOT 12
 PLAN M-59
 GEOGRAPHIC TOWNSHIP OF HERSCHEL
 MUNICIPALITY OF HASTINGS HIGHLANDS
 COUNTY OF HASTINGS

SCALE 1 : 250
 PAUL A. MILLER, O. L. S.



BAPTISTE LAKE
 (Controlled Water Level)
 CROWN



NOTES

BEARINGS ARE UTM GRID, DERIVED FROM OBSERVED REFERENCE POINTS A AND B, BY STATIC GNSS OBSERVATIONS, SHOWN HEREON, BEARING OF N41°00'20"E, REFERRED TO THE CENTRAL MERIDIAN OF UTM ZONE 17 (81° WEST LONGITUDE) NAD 83 (CSRS) V7.1 EPOCH 2010. GNSS BASELINE POST PROCESSED FROM LEICA REFERENCE STATION - HALIBURTON.
 FOR BEARING COMPARISONS, A ROTATION OF 2°08'10" COUNTER CLOCKWISE WAS APPLIED TO BEARINGS ON PLAN M-59.
 DISTANCES ARE GROUND AND CAN BE CONVERTED TO GRID BY MULTIPLYING BY THE COMBINED SCALE FACTOR OF 1.0002101.
 PROPERTY LINES ARE UNFENCED, UNLESS OTHERWISE NOTED.
 FENCES ARE LOCATED ON PROPERTY LINES, UNLESS OTHERWISE NOTED.
 SSIB'S PLANTED DUE TO INSUFFICIENT OVERBURDEN.
 CONTOUR ELEVATIONS ARE DERIVED FROM THE ONTARIO FOREST RESOURCES INVENTORY LEAF-ON LIDAR PROVIDED BY THE ONTARIO MINISTRY OF NATURAL RESOURCES AND FORESTRY DATED 2023.
 CONTAINS INFORMATION LICENSED UNDER THE OPEN GOVERNMENT LICENSE - ONTARIO.
 ORTHOMETRIC HEIGHTS ARE DERIVED FROM GNSS OBSERVATIONS POST PROCESSED FROM LEICA BASE STATION-HALIBURTON AND THE HTV2 GEOID MODEL.

LOT 11
 PIN 40051 - 0012
 PLAN

LOT 13
 PIN 40051 - 0014

COORDINATES ON NON RECTILINEAR BOUNDARIES		
POINT No.	NORTHING	EASTING
16	4999768.4	732586.3
17	4999768.3	732593.1
20	4999770.2	732608.4
22	4999767.6	732621.5

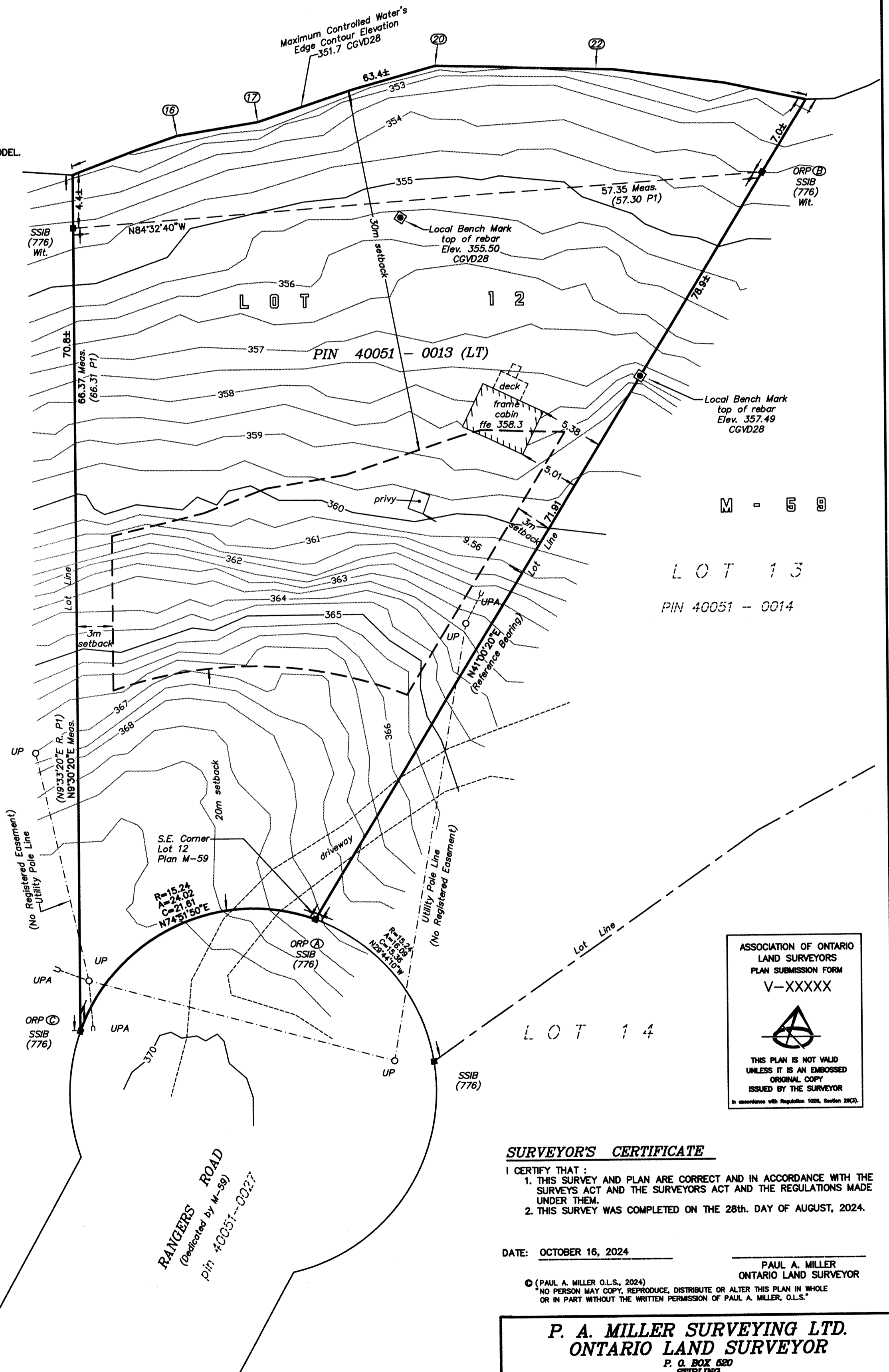
LEGEND

SYMBOL	DENOTES
□	SURVEY MONUMENT PLANTED
■	SURVEY MONUMENT FOUND
SSIB	SHORT STANDARD IRON BAR 25mm x 25mm x 60cm
SIB	STANDARD IRON BAR 25mm x 25mm x 120cm
Wt.	WITNESS
MEAS.	MEASURED
ORP	OBSERVED REFERENCE POINT
R.	ROTATED
P1	PLAN M-59
R, A, C	RADIUS, ARC, CHORD
UPA	UTILITY POLE ANCHOR
UP	UTILITY POLE
CGVD28	CANADIAN GEODETIC VERTICAL DATUM 1928 (1978)
776	M.J. McALPINE O.L.S.
FFE	FINISHED FLOOR ELEVATION

OBSERVED REFERENCE POINTS (ORPs) DERIVED FROM STATIC GNSS OBSERVATIONS, BASELINE POST PROCESSED FROM LEICA REFERENCE STATION-HALIBURTON, UTM ZONE 17, NAD83 (CSRS) V7.1 EPOCH 2010. COORDINATES TO RURAL ACCURACY PER SEC. 14 (2) OF O.REG. 216/10.

POINT ID	NORTHING	EASTING
ORP A	4999702.56	732586.36
ORP B	4999756.85	732633.57
ORP C	4999696.88	732565.51

COORDINATES CANNOT, IN THEMSELVES, BE USED TO RE-ESTABLISH CORNERS OR BOUNDARIES SHOWN ON THIS PLAN.



ASSOCIATION OF ONTARIO
 LAND SURVEYORS
 PLAN SUBMISSION FORM
 V-XXXX

THIS PLAN IS NOT VALID
 UNLESS IT IS AN EMBOSSED
 ORIGINAL COPY
 ISSUED BY THE SURVEYOR
In accordance with Regulation 1026, Section 28(3).

SURVEYOR'S CERTIFICATE

I CERTIFY THAT:
 1. THIS SURVEY AND PLAN ARE CORRECT AND IN ACCORDANCE WITH THE SURVEYS ACT AND THE SURVEYORS ACT AND THE REGULATIONS MADE UNDER THEM.
 2. THIS SURVEY WAS COMPLETED ON THE 28th. DAY OF AUGUST, 2024.

DATE: OCTOBER 16, 2024

PAUL A. MILLER
 ONTARIO LAND SURVEYOR

© (PAUL A. MILLER O.L.S., 2024)
 NO PERSON MAY COPY, REPRODUCE, DISTRIBUTE OR ALTER THIS PLAN IN WHOLE OR IN PART WITHOUT THE WRITTEN PERMISSION OF PAUL A. MILLER, O.L.S.™

P. A. MILLER SURVEYING LTD.
 ONTARIO LAND SURVEYOR
 P. O. BOX 620
 STIRLING
 (813) 366-3070

FILE:	24-12018	CID:	
DWG:	24-12018.dwg	CHK:	PAM X

METRIC
 DISTANCES AND COORDINATES ARE IN METRES AND CAN BE CONVERTED TO FEET BY DIVIDING BY 0.3048.