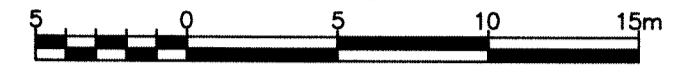


**SITE PLAN OF SURVEY**  
**PART OF LOTS 10, 11 AND 12**  
**REGISTRAR'S COMPILED PLAN 2272**  
**AND PART OF THE ROAD ALLOWANCE**  
**IN FRONT OF LOT 30, CONCESSION 5**  
**(CLOSED BY QR582330 AND QR578343)**  
**GEOGRAPHIC TOWNSHIP OF HERSCHEL**  
**MUNICIPALITY OF HASTINGS HIGHLANDS**  
**COUNTY OF HASTINGS**

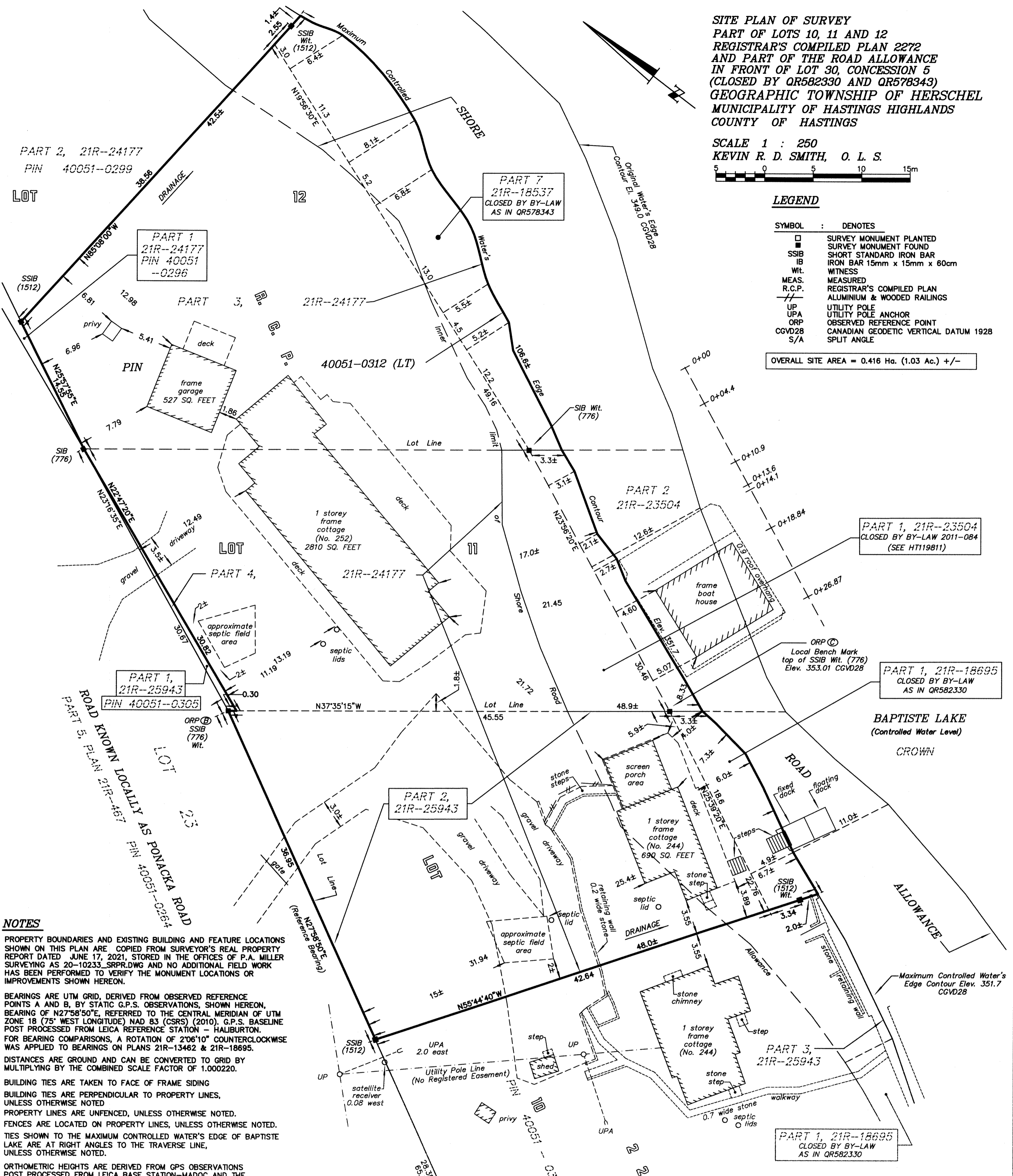
SCALE 1 : 250  
 KEVIN R. D. SMITH, O. L. S.



**LEGEND**

SYMBOL	DENOTES
□	SURVEY MONUMENT PLANTED
■	SURVEY MONUMENT FOUND
SSIB	SHORT STANDARD IRON BAR
IB	IRON BAR 15mm x 15mm x 60cm
Wit.	WITNESS
MEAS.	MEASURED
R.C.P.	REGISTRAR'S COMPILED PLAN
///	ALUMINIUM & WOODED RAILINGS
UP	UTILITY POLE
UPA	UTILITY POLE ANCHOR
ORP	OBSERVED REFERENCE POINT
CGVD28	CANADIAN GEODETIC VERTICAL DATUM 1928
S/A	SPLIT ANGLE

OVERALL SITE AREA = 0.416 Ha. (1.03 Ac.) +/-



**NOTES**

PROPERTY BOUNDARIES AND EXISTING BUILDING AND FEATURE LOCATIONS SHOWN ON THIS PLAN ARE COPIED FROM SURVEYOR'S REAL PROPERTY REPORT DATED JUNE 17, 2021, STORED IN THE OFFICES OF P.A. MILLER SURVEYING AS 20-10233\_SRP.R.DWG AND NO ADDITIONAL FIELD WORK HAS BEEN PERFORMED TO VERIFY THE MONUMENT LOCATIONS OR IMPROVEMENTS SHOWN HEREON.

BEARINGS ARE UTM GRID, DERIVED FROM OBSERVED REFERENCE POINTS A AND B, BY STATIC G.P.S. OBSERVATIONS, SHOWN HEREON, BEARING OF N27°58'50"E, REFERRED TO THE CENTRAL MERIDIAN OF UTM ZONE 18 (75° WEST LONGITUDE) NAD 83 (CSRS) (2010). G.P.S. BASELINE POST PROCESSED FROM LEICA REFERENCE STATION - HALIBURTON. FOR BEARING COMPARISONS, A ROTATION OF 2°06'10" COUNTERCLOCKWISE WAS APPLIED TO BEARINGS ON PLANS 21R-13462 & 21R-18695.

DISTANCES ARE GROUND AND CAN BE CONVERTED TO GRID BY MULTIPLYING BY THE COMBINED SCALE FACTOR OF 1.000220.

BUILDING TIES ARE TAKEN TO FACE OF FRAME SIDING

BUILDING TIES ARE PERPENDICULAR TO PROPERTY LINES, UNLESS OTHERWISE NOTED

PROPERTY LINES ARE UNFENCED, UNLESS OTHERWISE NOTED.

FENCES ARE LOCATED ON PROPERTY LINES, UNLESS OTHERWISE NOTED.

TIES SHOWN TO THE MAXIMUM CONTROLLED WATER'S EDGE OF BAPTISTE LAKE ARE AT RIGHT ANGLES TO THE TRAVERSE LINE, UNLESS OTHERWISE NOTED.

ORTHOMETRIC HEIGHTS ARE DERIVED FROM GPS OBSERVATIONS POST PROCESSED FROM LEICA BASE STATION-MADOC AND THE HTv2 GEOD MODEL.

THE WATER LEVEL OF BAPTISTE LAKE IS CONTROLLED TO CONTOUR ELEVATION OF 351.7 CGVD28 BY A DAM AT ITS OUTLET. THE MINISTRY OF NATURAL RESOURCES HAVE ESTABLISHED THE ELEVATION OF THE ORIGINAL WATER'S EDGE AS BEING 349.0 CGVD28. ELEVATIONS ARE DERIVED FROM AN M.N.R. BENCHMARK ON THE DAM AT THE OUTLET OF BAPTISTE LAKE HAVING AN ELEVATION OF 353.25 CGVD28.

OBSERVED REFERENCE POINTS (ORPs) DERIVED FROM STATIC GPS OBSERVATIONS, BASELINE POST PROCESSED FROM LEICA REFERENCE STATION - HALIBURTON, UTM ZONE 17, NAD83 (CSRS) (EPOCH 2010). COORDINATES TO RURAL ACCURACY PER SEC. 14 (2) OF O.REG. 216/10.

POINT ID	NORTHING	EASTING
ORP A	4998073.31	733442.29
ORP B	4998131.02	733472.95
ORP C	4998094.89	733500.70

COORDINATES CANNOT, IN THEMSELVES, BE USED TO RE-ESTABLISH CORNERS OR BOUNDARIES SHOWN ON THIS PLAN.

**METRIC** DISTANCES AND COORDINATES ARE IN METRES AND CAN BE CONVERTED TO FEET BY DIVIDING BY 0.3048.

Rev. #	Date	Changes
1	14/2/2024	Added septic lids at #252, new screen porch, deck, and dock at #244. Removed stone walk, steps, and deck at #244

ASSOCIATION OF ONTARIO LAND SURVEYORS  
 PLAN SUBMISSION FORM  
 V-73297

THIS PLAN IS NOT VALID UNLESS IT IS AN EMBOSSED ORIGINAL COPY ISSUED BY THE SURVEYOR

**SURVEYOR'S CERTIFICATE**

I CERTIFY THAT:

- THIS SURVEY AND PLAN ARE CORRECT AND IN ACCORDANCE WITH THE SURVEY'S ACT, THE SURVEYORS ACT AND THE REGULATIONS MADE UNDER THEM.
- THIS SURVEY WAS COMPLETED ON THE 18th DAY OF MARCH, 2021.

DATE : FEBRUARY 15, 2024  
 KEVIN R. D. SMITH  
 ONTARIO LAND SURVEYOR

© (KEVIN R. D. SMITH O.L.S., 2024)  
 NO PERSON MAY COPY, REPRODUCE, DISTRIBUTE OR ALTER THIS PLAN IN WHOLE OR IN PART WITHOUT THE WRITTEN PERMISSION OF KEVIN R. D. SMITH, O.L.S.

**P. A. MILLER SURVEYING LTD.**  
**ONTARIO LAND SURVEYOR**  
 P. O. BOX 520  
 STIRLING  
 (613) 395-3070  
 21-10773\_SITEPLANOF SURVEY\_rev1