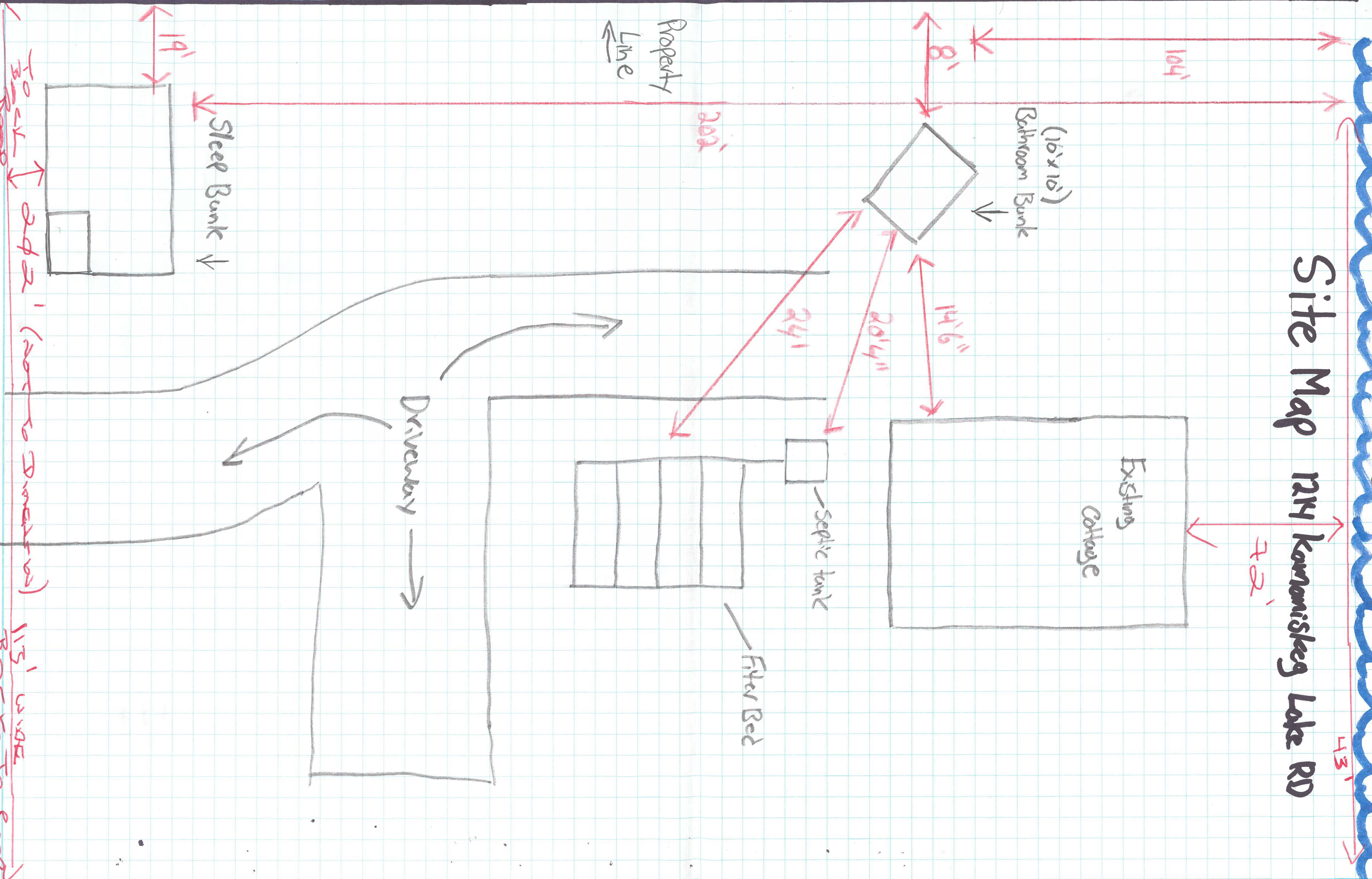


Kammaniskey Lake

Site Map 124 Kammaniskey Lake RD



104'

43'

(16'x16')

Bathroom Bunk

14'6"

20'4"

24'

20'

Property Line

Sleep Bunk

19'

TO GET TO ROAD

24'2"

(NOT TO DIMENSIONS)

113' BACK TO ROAD

Existing Cottage

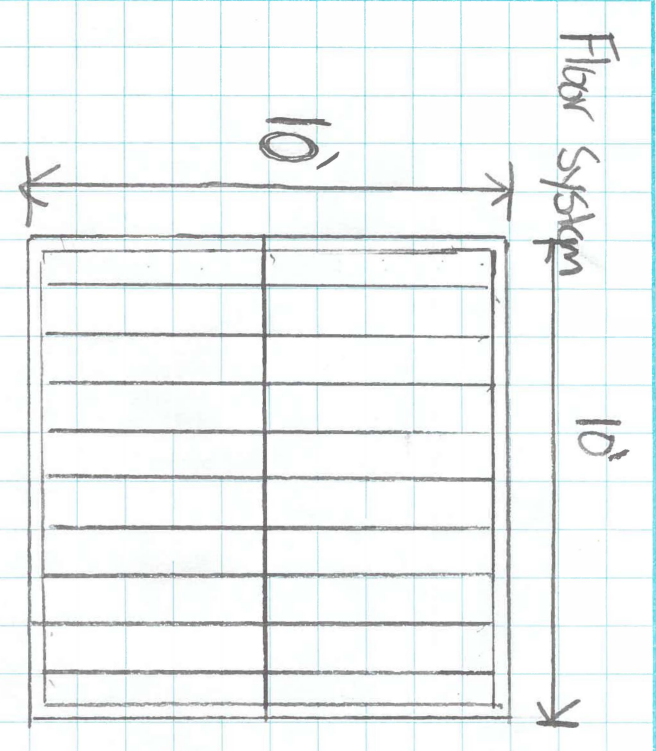
72'

Septic tank

Filter Bed

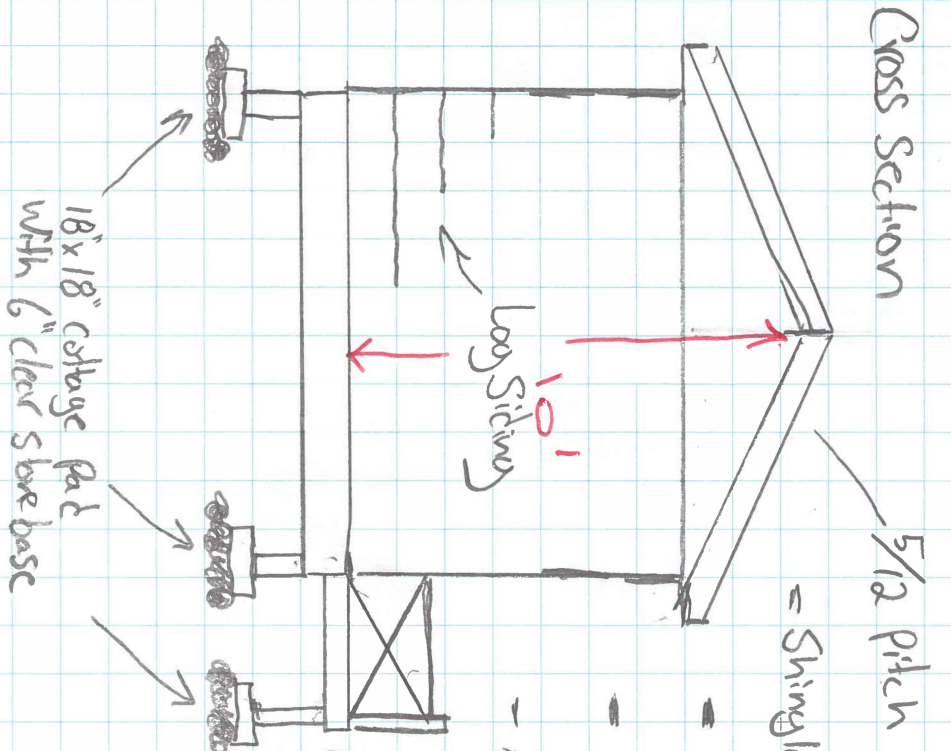
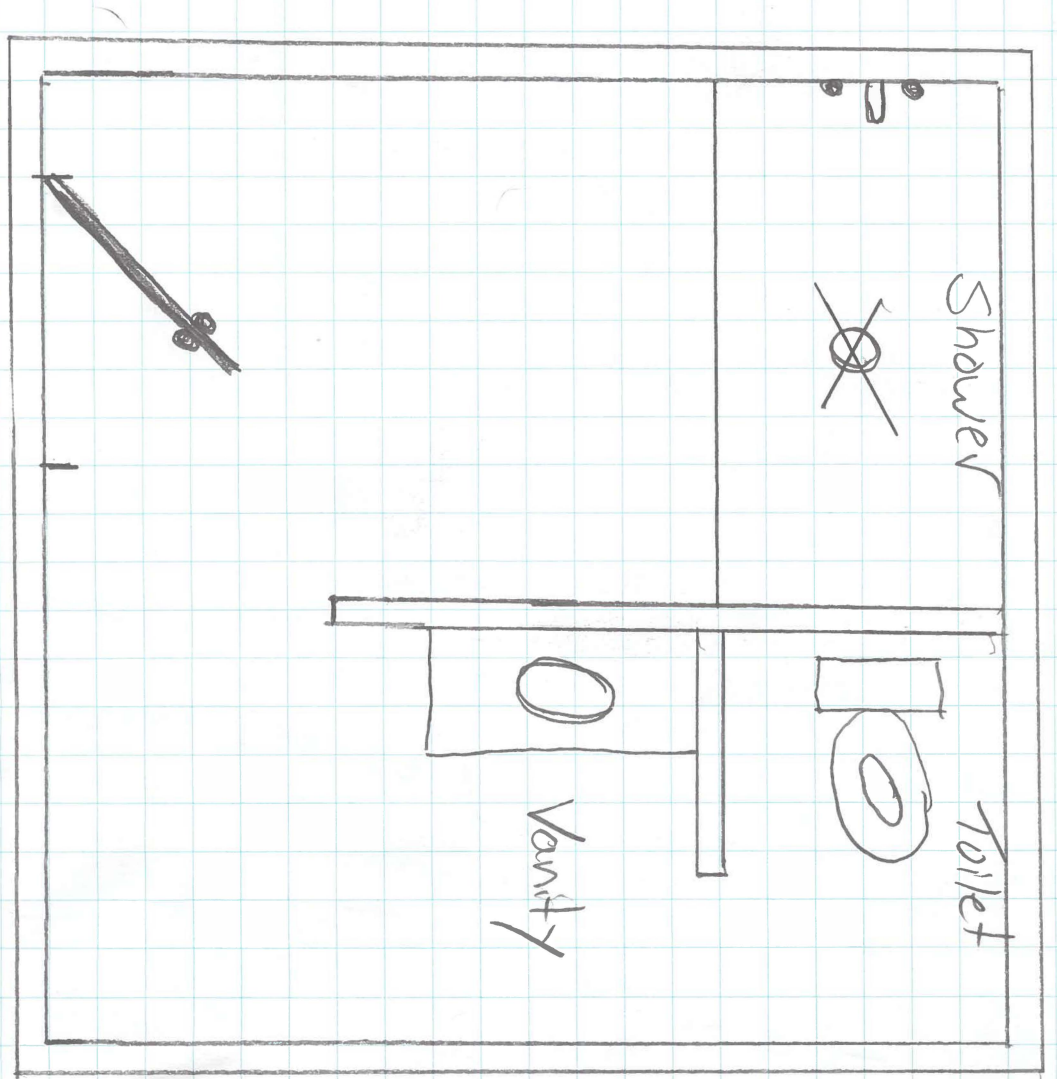
Driveway

1214 Kamniskog Lake RD Bathroom Bank



- 2ply 2x10 PT Rim board / Flush beam
- 2x8 Joist 16" O/C, mit span blocking in place, Joist hangers
- 3/4 T/G sub floor
- 6x6 Support Posts in all corners supported by 18x18" cotchuge pad

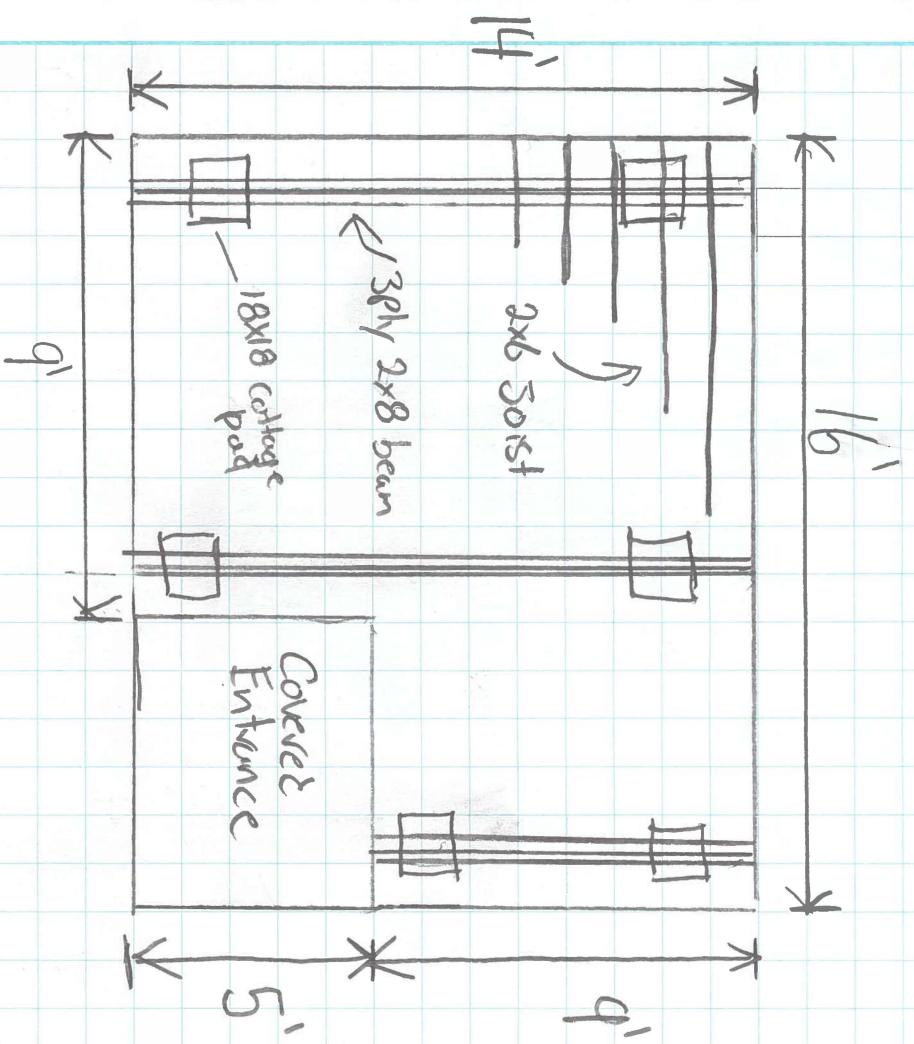
Floor Plan



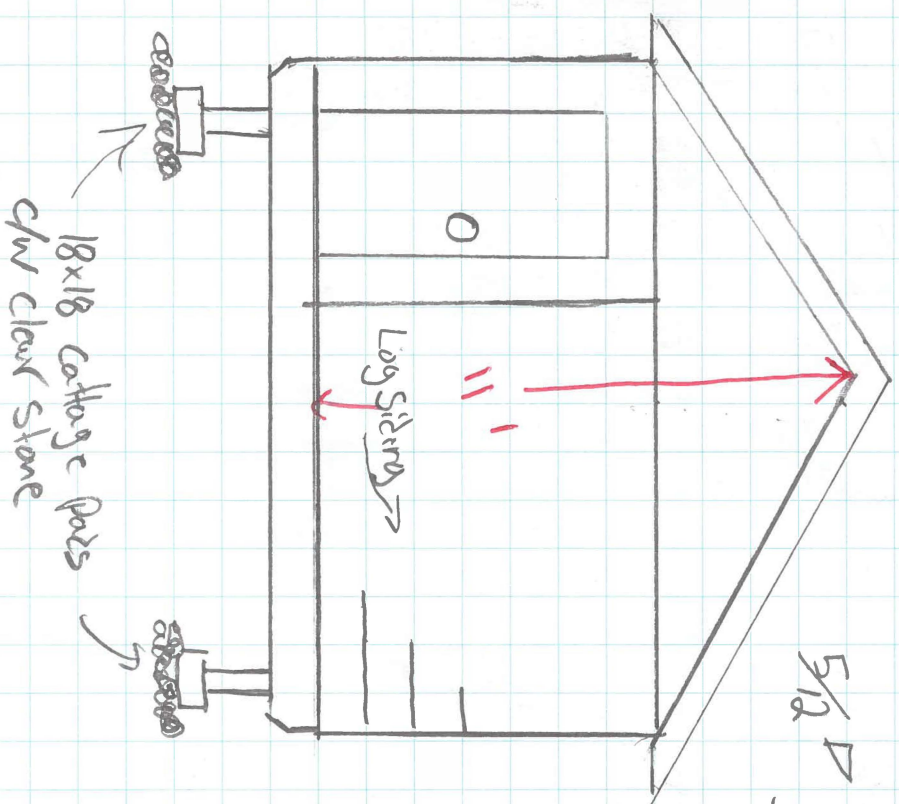
- = Shingled roof, Synthetic underlay, Ice + water
- = 2x6 rafter 24" O/C, 2x8 Ridge, 1x12 roof Sheathing
- = 2x4 wall construction 16" O/C, 2x10 Headers, 1x12 Sheathing
- Aluminum Soffit + Fascia, Pine log Siding
- open Stud on interior

4x4' deck 2x6 Joists 16" O/C, 4x4 support posts

1214: Kameniskoy Lake RD Sleep Bank



- 3ply 2x8 beams (PT)
- 2x6 Joists 16" o/c Mid Span blocking (PT)
- beam to beam span 7' o/c
- Support post to post span 10' o/c
- 2x8 Rim board (PT)
- 3/4 T/G sub floor
- Covered entrance 2x6 joists on hangers with 2x6 pt deck top



- Shingled Roof, Synthetic underlay / ice water shield
- 2x6 Rafter @ 16" o/c, 2ply 2x8 ridge, 1x12 Roof Sheathing
- 2x4 wall construction 16' o/c, 2x12 Headers 12 Sheathing
- Aluminum Soffit + Fascia, Pine Log Siding
- open Stud on interior