


PLAN OF SURVEY
OF PART OF
LOT 14
CONCESSION 8
(GEOGRAPHIC TOWNSHIP OF HERSCHEL)
MUNICIPALITY OF HASTINGS HIGHLANDS
COUNTY OF HASTINGS

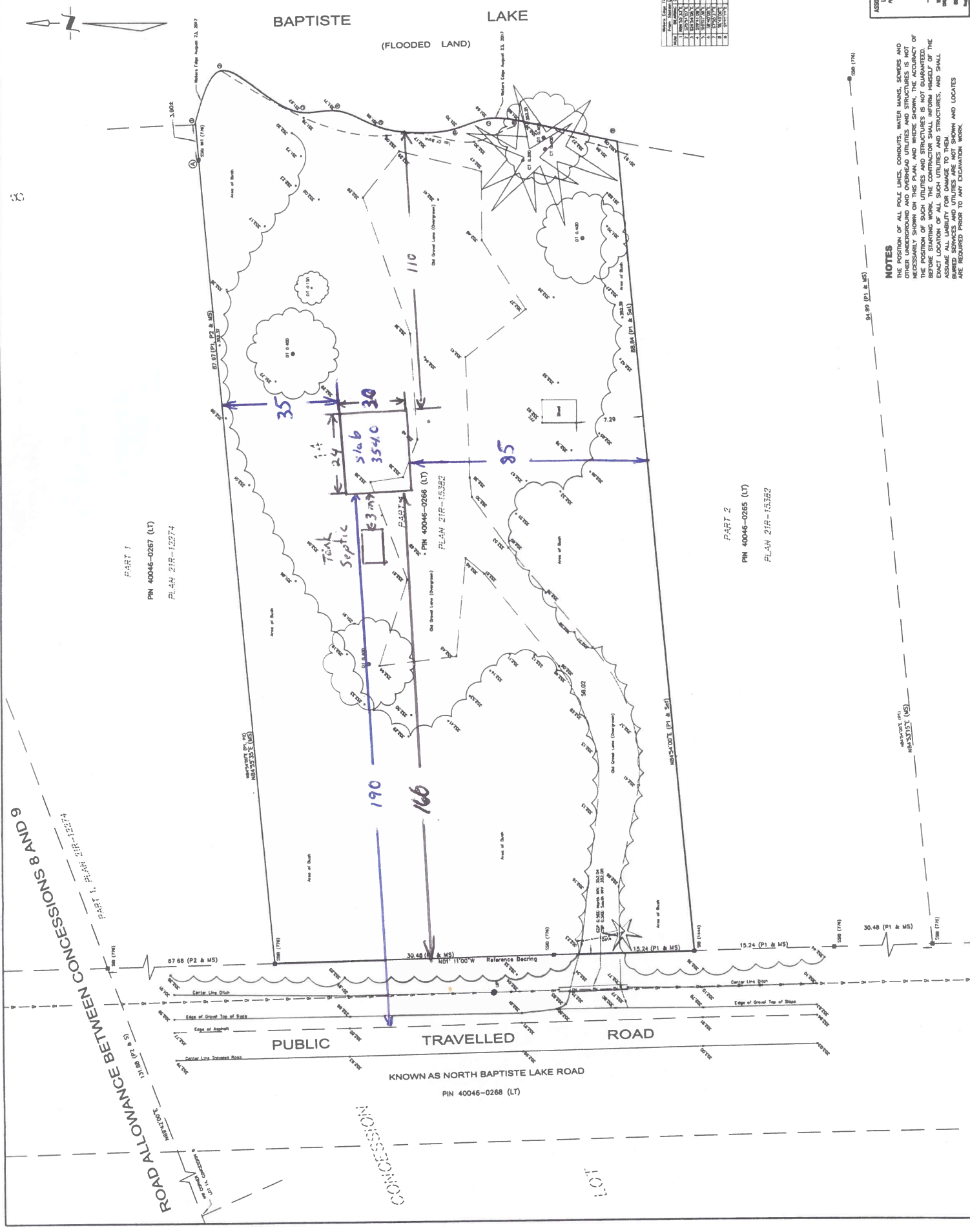
SCALE 1: 200



RODNEY GEYER
ONTARIO LAND SURVEYOR INC.



BAPTISTE LAKE
(FLOODED LAND)



PART 1
PIN 40046-0267 (LT)
PLAN 21R-15324

PART 2
PIN 40046-0265 (LT)
PLAN 21R-15352

ROAD ALLOWANCE BETWEEN CONCESSIONS 8 AND 9
10' (3.048m) (P1 & M5)
10' (3.048m) (P1 & M5)
10' (3.048m) (P1 & M5)
10' (3.048m) (P1 & M5)
10' (3.048m) (P1 & M5)
10' (3.048m) (P1 & M5)

CONCESSION 8

LOT 14

NOTES
BEARINGS ARE ASTROMERIC AND ARE REFERRED TO THE EASTERN LIMIT OF
MAGNETIC VARIATION AS REPORTED PLAN 21R-15348,
HAVING A BEARING OF N 01°11'00" W.

BENCHMARK NOTE
ELEVATIONS SHOWN HEREON ARE DERIVED FROM
ELEVATIONS SHOWN ON THE PLAN AT THE OUTLET OF BAPTISTE
LAKE HAVING AN ELEVATION OF 353.22 METRES.

THE WATER LEVEL OF BAPTISTE LAKE IS CONTROLLED BY A DAM AT ITS
OUTLET. THE MINISTRY OF NATURAL RESOURCES HAS ESTABLISHED THE
ELEVATION OF THE ORIGINAL WATER'S EDGE AS BEING 351.77 METRES

METRIC NOTE
DISTANCES AND COORDINATES SHOWN HEREON ARE IN METRES AND
CAN BE CONVERTED TO FEET BY DIVIDING BY 0.3048.

- LEGEND**
- DENOTES MONUMENT
 - P1 DENOTES DEPOSITED PLAN 21R-15324
 - P2 DENOTES DEPOSITED PLAN 21R-15324
 - P3 DENOTES DEPOSITED PLAN 21R-15324
 - P4 DENOTES DEPOSITED PLAN 21R-15324
 - P5 DENOTES DEPOSITED PLAN 21R-15324
 - P6 DENOTES DEPOSITED PLAN 21R-15324
 - P7 DENOTES DEPOSITED PLAN 21R-15324
 - P8 DENOTES DEPOSITED PLAN 21R-15324
 - P9 DENOTES DEPOSITED PLAN 21R-15324
 - P10 DENOTES DEPOSITED PLAN 21R-15324
 - P11 DENOTES DEPOSITED PLAN 21R-15324
 - P12 DENOTES DEPOSITED PLAN 21R-15324
 - P13 DENOTES DEPOSITED PLAN 21R-15324
 - P14 DENOTES DEPOSITED PLAN 21R-15324
 - P15 DENOTES DEPOSITED PLAN 21R-15324
 - P16 DENOTES DEPOSITED PLAN 21R-15324
 - P17 DENOTES DEPOSITED PLAN 21R-15324
 - P18 DENOTES DEPOSITED PLAN 21R-15324
 - P19 DENOTES DEPOSITED PLAN 21R-15324
 - P20 DENOTES DEPOSITED PLAN 21R-15324
 - DENOTES CONTOUR TREE
 - DENOTES CONTOUROUS TREE
 - DENOTES SPOT ELEVATION


Point	Elevation
1	1100.00
2	1102.00
3	1104.00
4	1106.00
5	1108.00
6	1110.00
7	1112.00
8	1114.00
9	1116.00
10	1118.00
11	1120.00

SURVEYOR'S CERTIFICATE

- I CERTIFY THAT:
1. THIS SURVEY AND PLAN ARE CORRECT AND IN ACCORDANCE
WITH THE REQUIREMENTS OF THE SURVEY ACT AND THE
REGULATIONS MADE UNDER THEREIN.
2. THE SURVEY WAS COMPLETED ON THE 24th DAY OF AUGUST,
2017

SEPTEMBER 7, 2017
DATE: _____
RODNEY H. GEYER
ONTARIO LAND SURVEYOR

ASSOCIATION OF ONTARIO
LAND SURVEYORS
PLAN 21R-15324



NOTES
THE LOCATION OF ALL POLE LINES, CONDUITS, WATER MAINS, SEWERS AND
OTHER UNDERGROUND AND OVERHEAD UTILITIES AND STRUCTURES IS NOT
NECESSARILY SHOWN ON THIS PLAN, AND WHERE SHOWN, THE ACCURACY OF
THE POSITION OF SUCH UTILITIES AND STRUCTURES IS NOT GUARANTEED. THE
EXACT LOCATION OF ALL SUCH UTILITIES AND STRUCTURES, AND SMALL
BURIED SERVICES AND UTILITIES ARE NOT SHOWN AND LOCATES
ARE REQUIRED PRIOR TO ANY CONSTRUCTION WORK.

CONVEYANCE BY PLAN OF PART OF
CONCESSION 8 (GEOGRAPHIC TOWNSHIP OF HERSCHEL)
MUNICIPALITY OF HASTINGS HIGHLANDS
COUNTY OF HASTINGS

RODNEY GEYER
ONTARIO LAND SURVEYOR INC.
7913 MAIN STREET, WEST, ONTARIO CAN L1P
TEL: (416) 708-2011 FAX: (416) 708-9140
www.roygey.com

PREPARED BY: RGC DATE: 05 SEP 07, 2017 REV: 17-2327-1 A