



### **Public Notice**

Take Notice that pursuant to the Municipality of Hastings Highlands Bylaw 2020-060 Sale of Municipal Surplus Lands, the Corporation of the Municipality of Hastings Highlands proposes to enact a Bylaw pursuant to the *Municipal Act*, 2001, Chapter 25 to declare the following lands surplus to the Municipality's needs:

Part of Lots 3 and 4, Concession 2, being Parts 1, 3 and 4, Reference Plan 21R-25331, in the Geographic Township of Herschel, now in the Municipality of Hastings Highlands, County of Hastings

**See map showing Location of Subject Lands to be sold.**

A copy of the survey plan showing the properties under consideration may be inspected on application to the Clerk undersigned.

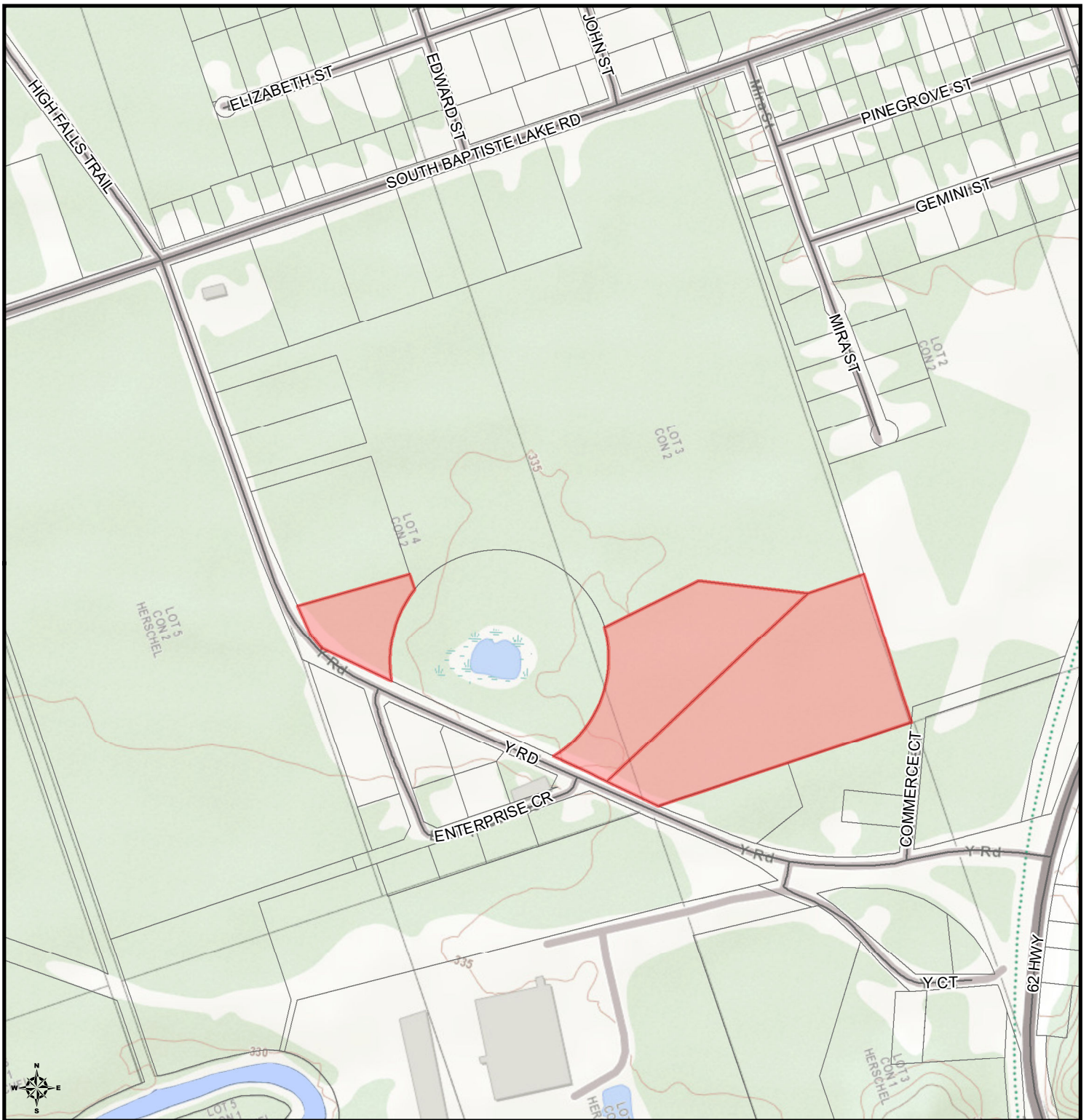
And Further Take Notice that Council shall hear any person who wishes to comment on the proposed declaration of surplus land; such person may do so by:

- a) Appearing virtually at the Council Meeting, if possible, and advising the Chair when the public is asked for verbal or written representation on the matter; or
- b) Delivering such comment in writing to the Clerk of the Municipality before the date the subject matter is to be considered by Council.

The proposed Bylaw shall be heard at a meeting of Council in the Council Chamber at the Municipal Office on 5<sup>th</sup> day of May, 2021 at the hour of 09:00 o'clock in the morning.


Suzanne Huschilt, Municipal Clerk  
Municipality of Hastings Highlands  
33011 Hwy 62N, PO Box 130  
Maynooth, ON K0L 2S0  
Phone (613) 338-2811 Fax (613) 338-3292  
[www.hastingshighlands.ca](http://www.hastingshighlands.ca)

# KEY MAP



## LOCATION OF SUBJECT LANDS

Part of Lots 3 & 4, Concession 2,  
being Parts 1, 3 and 4, Reference Plan 21R-25317  
Municipality of Hastings Highlands  
(Former Herschel Township)

 Subject Land

0 150 300  
Metres



*Hastings Highlands*

*Beautiful By Nature*

Prepared For: The Municipality of Hastings Highlands  
Prepared By: County of Hastings GIS Services

Produced by the County of Hastings with data supplied under license by members of the Ontario Geospatial Data Exchange. This product is for informational purposes and may not have been prepared for, or be suitable for legal, engineering, or surveying purposes. The County of Hastings disclaims all responsibility for errors, omissions or inaccuracies in this publication.